

The North of England Inclusion Conference

Workshop A – The Big Picture

Riana Nelson

Monday 11th March 2019
The Principal Hotel, York

#NEIC19



Doncaster
Council

Big Picture Learning Doncaster



Big Picture Learning

Background

The Problem: High Exclusions, Poor attendance and poor outcomes for those not in mainstream education.

The Plan: – Behaviour Transformation Plan

- Systems approach
- 3 year plan – currently yr. 2
- Graduated approach

Big Picture Learning – one of the proposals in resetting the landscape.

The Governance: Doncaster Growing Together – Inclusion; Senior Responsible Officer meeting; Task and Finish Group



Life Chances Fund

BIG
PICTURE
LEARNING^{UK}



Innovation
Unit

New solutions
for thriving societies

3 Fundamentals:

The Social Impact
Bond

The Build

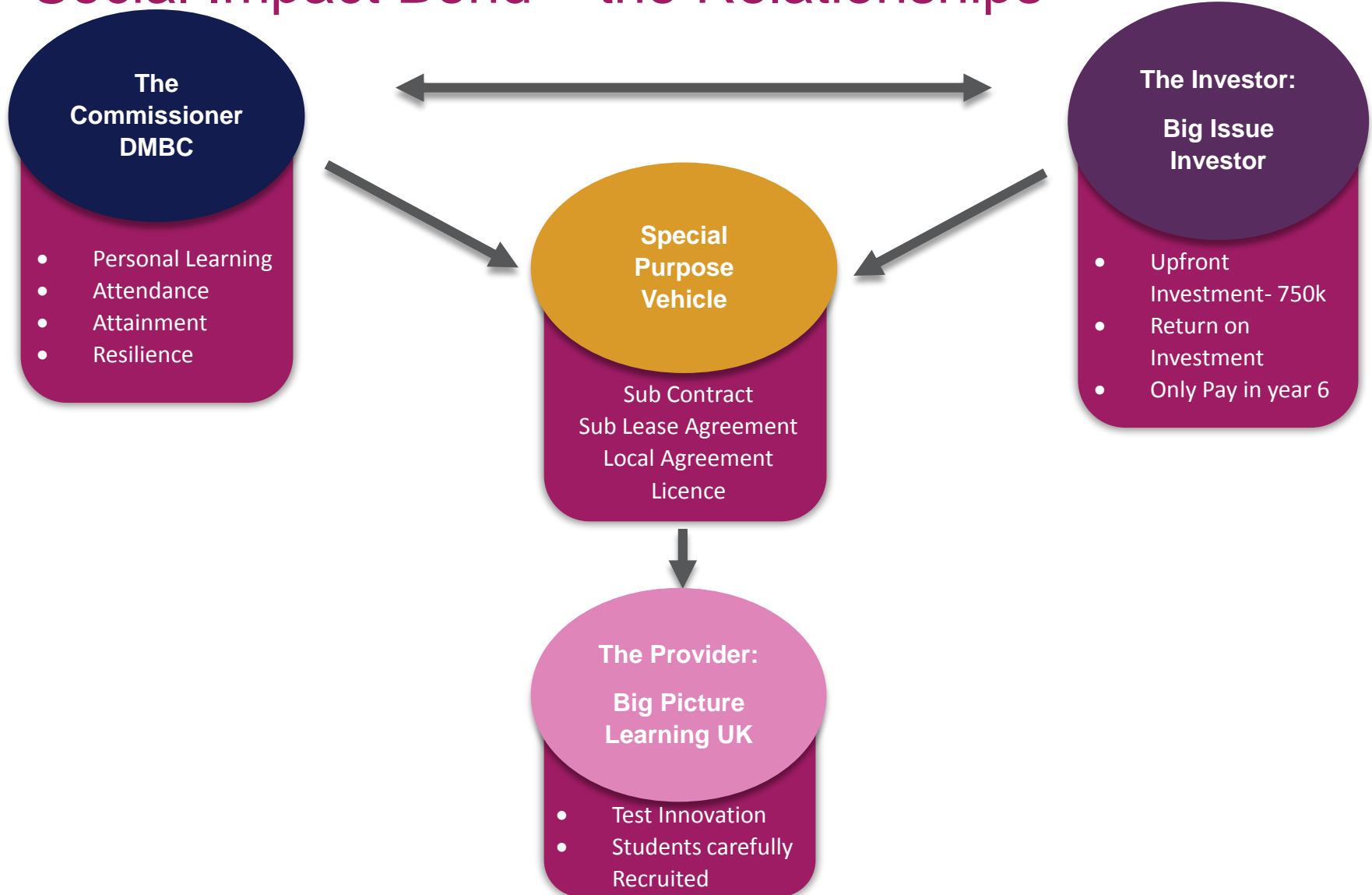
The Provision



The Social Impact Bond



Social Impact Bond – the Relationships



Outcomes

	Metric	Measured	Outcome payment	Base case % of students
Outcome 1.1	Completion of a Personal Learning Plan (Y1 + Y2 only)	One off	£10,673	85%
Outcome 1.2	Achievement of target attendance rate Y1 75%, Y2 80%, Y3 85% Y4-6 90%	Measured and paid monthly	£1,283	87% (average)
Outcome 2	Achievement or better than expected progress as per personal targets measured through term end tests (targets moderated by peer review) Yr 2 – Yr 6	Termly	£1,579	84% (average)
Outcome 3	Maintenance or improvement of STEN score against baseline Yr 2 – Yr 6	Termly	£6,119	87% (average)

All payments are made on an individual basis

Cost per head comparison

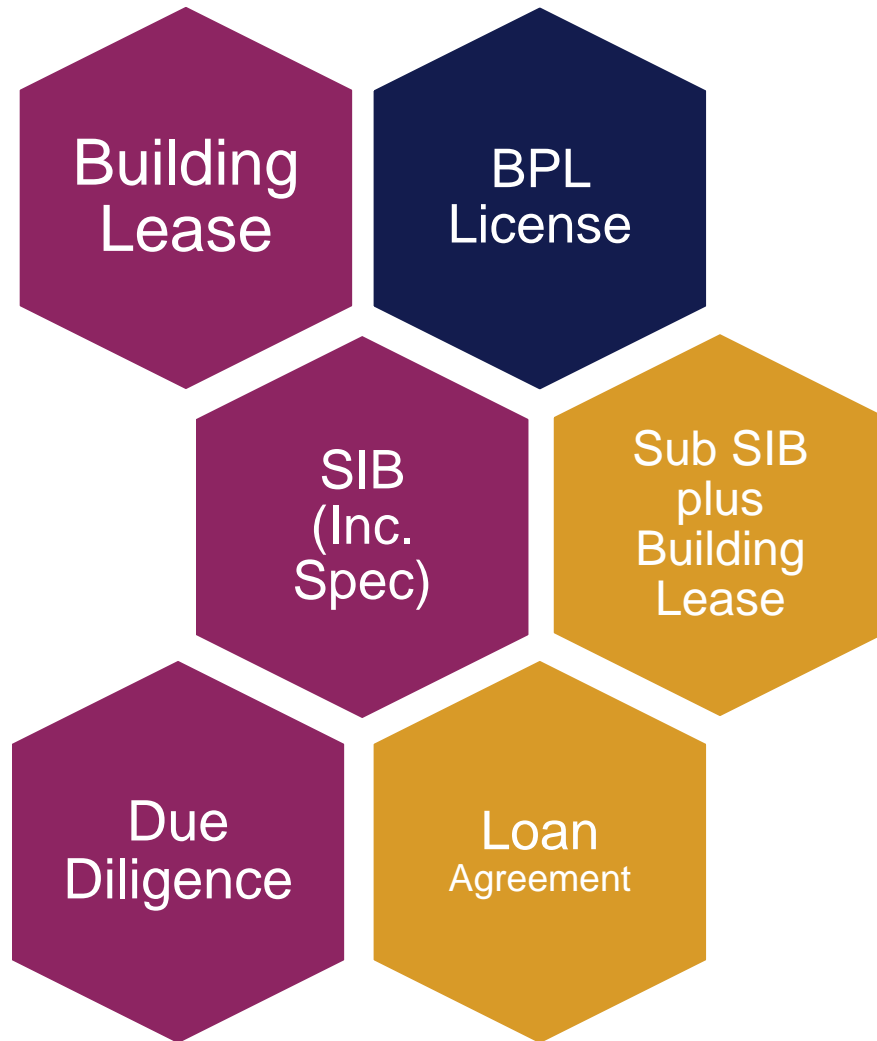
	CURRENT MODEL (JULY 2018)				
	Whole Contract Term		Peak Flow only (Y2-5)		
	Total Cost	Net DMBC	All Costs	Direct Service	Net DMBC
Total Service Cost	£ 6,049,928	4,294,481			
Cost per start	£ 28,033	£ 19,899	<i>Ave NOR (=53)</i>		
Annual cost per YP	£ 21,745	£ 15,435	£ 17,347	£ 16,164	£ 11,474
Current AP Ave	£ 15,388	£ 15,388	£ 15,388	£ 15,388	£ 15,388
Variance	(£6,357)	(£47)	(£1,959)	(£776)	£ 3,914
Using Oct 17 Ave NOR (51)	<i>Ave NOR (=53)</i>		<i>Ave NOR (= 58)</i>		
Annual Cost per YP	£19,771	£14,034.25	£0	£0	
Variance from AP	(£4,383)	£1,354	£15,388	£15,388	
If based on cost per commissioned place (i.e. 60)			£15,309	£14,265	£10,126

Despite these increases, the service is now only marginally more expensive than AP when the LCF grant is factored in (+£47 pp/pa).

However, the average net cost to DMBC during Peak Flow reduces to £11,474 pp/pa, £3,914 less than AP. If this service was commissioned on a like-for-like basis with other AP (i.e. £ per commissioned place = 60), the cost per place would be £10,126 net of the LCF grant.

Therefore, to recommission the service post-SIB without the SPV structure (or the LCF grant), the cost per commissioned place would be £14,265 pp/pa – significantly more cost-effective than local.

Complexities around Contracting



- DMBC – various
- DMBC – external legal
- BII – various
- BII – Solicitors
- BPL UK – various
- BPL UK - Solicitors



Where we are:

- Life Chances Fund – Agreement to make outcomes contribution up to £1.7mil / 29% of outcomes payments
- SIB contract signed.
- SIB contract governance and reporting.



The BPL School



Bentley Campus

- Planning Permission granted on the 19th of September 2018
- Preparation and clearance of the site – late September 2018
- Building arrived early Mid October.
- Interior well underway
- Hand over mid December 2018

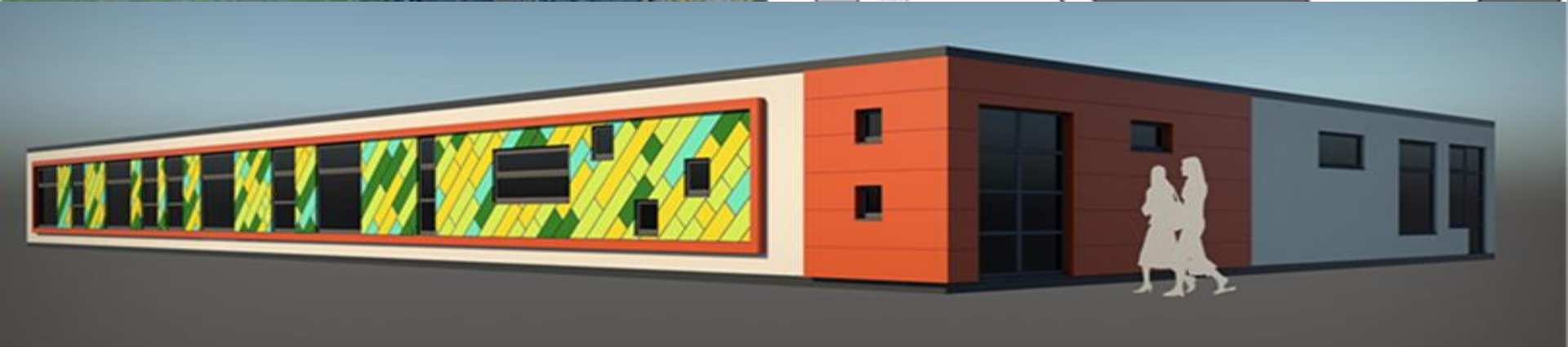
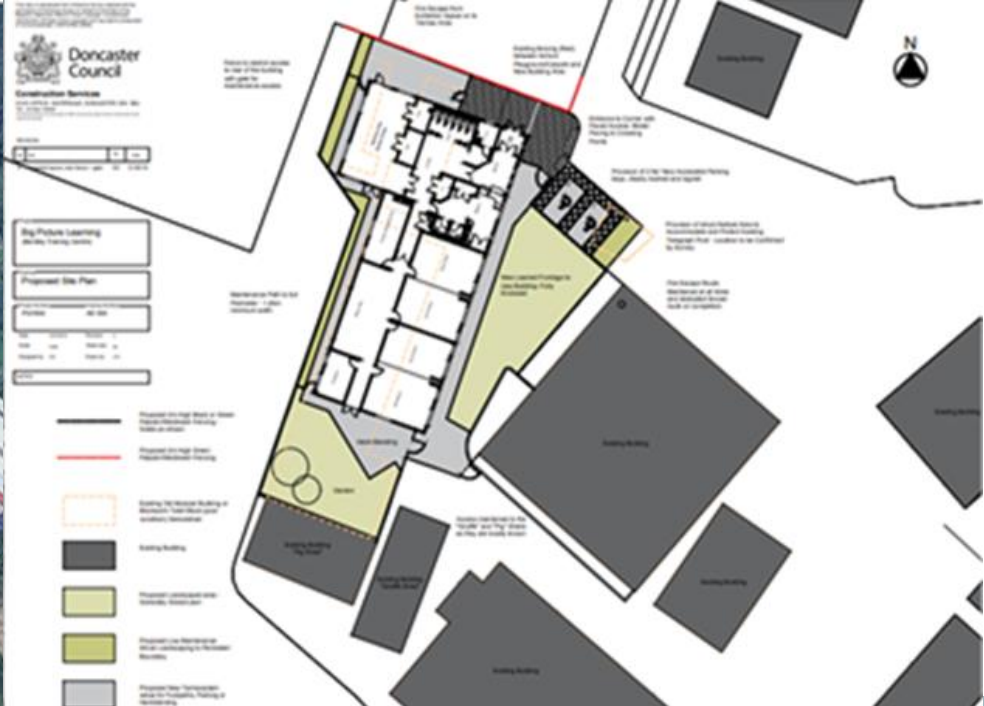
Bentley Campus

- 2nd meeting held on Friday
- Great potential for collaboration on youth

Risks and Issues:

- Security of site
- Warm and wet weather causing delay in commencing outside works

In the beginning ...



Beginning to take shape...





Big Picture Learning School – Doncaster

An INDEPENDENT SCHOOL



Cohort eligibility criteria

- 1 Students aged 11-16 years with a minimum reading age of 8.5 years
- 2 2 out of 3 core attributes present
 - More than 15 days fixed term exclusion in the last 3 years
 - Persistent absence (attendance level below 90%) over the last three terms
 - Unmet potential: Teacher assessment of underperformance vs expected progress as assessed at key stage 1.
- 3 & experienced 2 additional criteria
 - Current designated Social Worker
 - Family has had an Early Help Assessment eligible referral in the last 12 months
 - Had an eligible referral to CAMHs at Tier 2 or above accepted, or been engaged with CAMHs in the last 12 months
 - Interaction with Youth Offending Services - eligible referral to EPIC in the last 12 months.

The offer and the Young People

<https://youtu.be/8BQsnaISYIA>

3 foundation principles:

- learning must be based on the interests and goals of each student;
- student's curriculum must be relevant to the people and places that exist in the real world;
- a student's abilities must be authentically measured by the quality of her or his work.

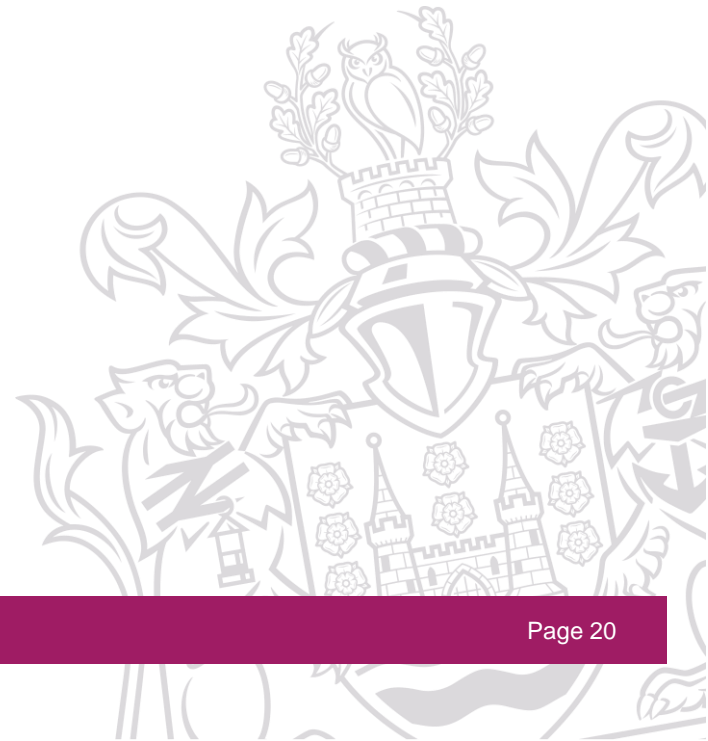


How it works:

- **The Advisor** works with a small group of students to find what motivates and interests each student.
- **The Mentor**, a lawyer, engineer, merchant, etc., guides each student's internship.
- **The Parent** is actively enrolled as a resource to the BP community.
- **The Student** (and peers) interact to reinforce each other's passion for real work in the real world. The result is a self-teaching community of learners where no one feels left out, and each helps motivate the other.

Next Steps

- Ofsted
- Opening with 8 students after half term.
- 30 by Summer term
- 60 new academic year



Questions...

